



# KOYOT 5

Technical specifications

## TECHNICAL SPECIFICATIONS

			<b>22</b>	<b>24</b>	<b>26</b>	<b>28</b>	<b>31</b>
CELLS	NUMBER		39	39	39	39	39
ASPECT RATIO	FLAT		4,7	4,7	4,7	4,7	4,7
AREA	FLAT	m2	22	24	26	28	31
	PROJECTED	m2	18,92	20,62	22,24	23,99	26,55
SPAN	FLAT	m	10,27	10,72	11,13	11,56	12,16
CORD	MAXIMUM	m	2,66	2,77	2,88	3	3,15
LINES	TOTAL	M	213	223	233	242	255
	MAIN		2+1/3/2	2+1/3/2	2+1/3/2	2+1/3/2	2+1/3/2
RISERS	NUMBER	3+1	A+A'/B/C	A+A'/B/C	A+A'/B/C	A+A'/B/C	A+A'/B/C
	ACCELERATOR	mm	130	130	130	130	130
TOTAL WEIGHT IN FLIGHT	MIN-MAX	kg	45-70	60-80	75-95	90-115	110-135
GLIDER WEIGHT		kg	4,2	4,5	4,8	5,1	5,5
CERTIFICATION	EN/LTF		A	A	A	A	A

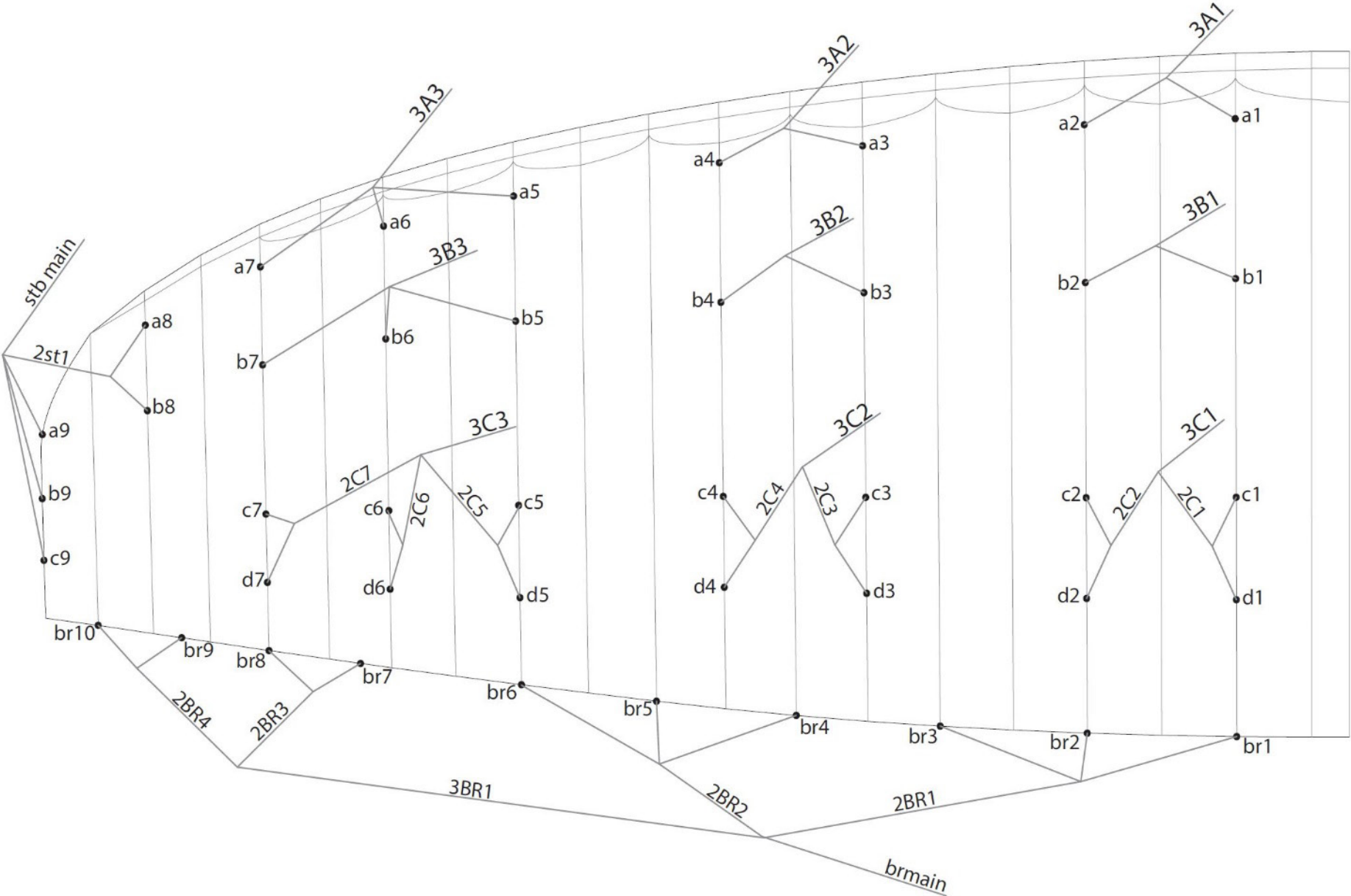
## MATERIALS TECHNICAL DATA

CANOPY	FABRIC CODE	SUPPLIER
UPPER SURFACE	N30 DMF	DOMINICO TEX CO (Korea)
BOTTOM SURFACE	N20 DMF	DOMINICO TEX CO (Korea)
PROFILES	30DFM	DOMINICO TEX CO (Korea)
DIAGONALS	30DFM	DOMINICO TEX CO (Korea)
LOOPS	LKI - 10	KOLON IND. (KOREA)
REINFORCEMENT LOOPS	W-420	D-P (GERMANY)
TRAILING EDGE REINFORCEMENT	MYLAR	D-P (GERMANY)
RIBS REINFORCEMENT	LTN-0.8/1 STICK	SPORTWARE CO.CHINA
THREAD	SERAFIL 60	AMAN (GERMANY)

SUSPENSION LINES	FABRIC CODE	SUPPLIER
UPPER CASCADES	TNL - 80	TEIJIM LIMITED (JAPAN)
UPPER CASCADES	TNL - 140	TEIJIM LIMITED (JAPAN)
MIDDLE CASCADES	TNL - 80	TEIJIM LIMITED (JAPAN)
MIDDLE CASCADES	TNL - 140	TEIJIM LIMITED (JAPAN)
MAIN	TNL - 220	TEIJIM LIMITED (JAPAN)
MAIN	TNL - 280	TEIJIM LIMITED (JAPAN)
MAIN BREAK	TARAX-240	EDELRID (GERMANY)
THREAD	SERAFIL 60	AMAN (GERMANY)

RISERS	FABRIC CODE	SUPPLIER
MATERIAL	G-R 19	TECNI SANGLES (FRANCE)
COLOR INDICATOR	210D	TECNI SANGLES (FRANCE)
THREAD	V138	COATS (ENGLAND)
MAILLONS	MRI4	ANSUNG PRECISION (KOREA)

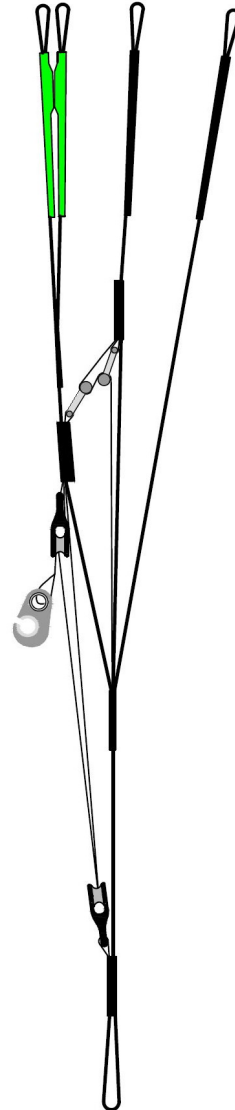
# SUSPENSION PLAN



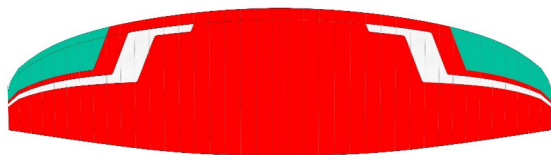
# RISERS PLAN

<b>A</b>	<b>A'</b>	<b>B</b>	<b>C</b>
3A1	3A3	3B1	3C1
3A2		3B2	3C2
		3B3	3C3

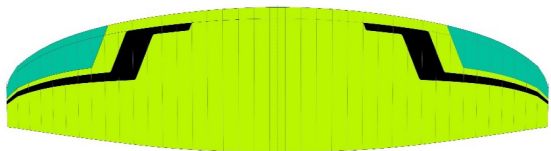
stb main



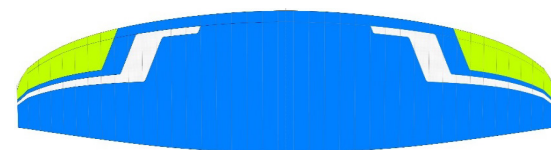
# COLORS



<b>VOLCANO</b>	SB1	DRAGON RED	TOP	REF: 636
	SB2	WHITE	BOTTOM - ALL WHITE	REF:001
	SB3	SPECTRA GREEN	HORN	REF: 17-5335
	SB4	WHITE	PRINCIPAL SHADOW	REF:001



<b>MATRIX</b>	SB1	LIMA	TOP	REF: 500
	SB2	WHITE	BOTTOM - ALL WHITE	REF: 001
	SB3	SPECTRA GREEN	HORN	REF: 17-5335
	SB4	BLACK	PRINCIPAL SHADOW	REF: 102



<b>BOREAL</b>	SB1	ROYAL BLUE	TOP	REF: 317
	SB2	WHITE	BOTTOM - ALL WHITE	REF: 001
	SB3	LIMA	HORN	REF: 500
	SB4	WHITE	PRINCIPAL SHADOW	REF: 001



<b>GUM</b>	SB1	PINK	TOP	REF: 19-2047
	SB2	WHITE	BOTTOM - ALL WHITE	REF: 001
	SB3	WHITE	HORN	REF: 001
	SB4	BLACK	PRINCIPAL SHADOW	REF: 102

## WING LOAD TECHNICAL DATA

### KOYOT 5

22			24			26			28			31		
P.T.V.		KG/M2	P.T.V.		KG/M2	P.T.V.		KG/M2	P.T.V.		KG/M2	P.T.V.		KG/M2
45	=	2,05	60	=	2,50	75	=	2,88	90	=	3,21	110	=	3,55
50	=	2,27	65	=	2,71	80	=	3,08	95	=	3,39	115	=	3,71
55	=	2,50	70	=	2,92	85	=	3,27	100	=	3,57	120	=	3,87
60	=	2,73	75	=	3,13	90	=	3,46	105	=	3,75	125	=	4,03
65	=	2,95	80	=	3,33	95	=	3,65	110	=	3,93	130	=	4,19
70	=	3,18							115	=	4,11	135	=	4,35

# LINES TECHNICAL DATA

KOYOT 5					22																								
A					B					C					D					BRAKE									
ref.	mat.	kg	colour	m/m	ref.	mat.	kg	colour	m/m	ref.	mat.	kg	colour	m/m	ref.	mat.	kg	colour	m/m	ref.	mat.	kg	colour	m/m					
a1	TNL	140	green	1348	b1	TNL	140	blue	1334	c1	TNL	80	blue	955	d1	TNL	80	blue	1065	br1	TNL	80	red	1681					
a2	TNL	140	green	1314	b2	TNL	140	blue	1299	c2	TNL	80	blue	936	d2	TNL	80	blue	1048	br2	TNL	80	red	1359					
a3	TNL	140	green	1278	b3	TNL	140	blue	1254	c3	TNL	80	blue	889	d3	TNL	80	blue	996	br3	TNL	80	red	1236					
a4	TNL	140	green	1242	b4	TNL	140	blue	1222	c4	TNL	80	blue	847	d4	TNL	80	blue	946	br4	TNL	80	red	1472					
a5	TNL	80	green	1951	b5	TNL	80	blue	1874	c5	TNL	80	blue	663	d5	TNL	80	blue	768	br5	TNL	80	red	1308					
a6	TNL	80	green	1844	b6	TNL	80	blue	1779	c6	TNL	80	blue	735	d6	TNL	80	blue	827	br6	TNL	80	red	1319					
a7	TNL	80	green	1779	b7	TNL	80	blue	1735	c7	TNL	80	blue	494	d7	TNL	80	blue	565	br7	TNL	80	red	510					
a8	TNL	80	red	924	b8	TNL	80	red	877	c9	TNL	80	red	1670						br8	TNL	80	red	374					
a9	TNL	80	red	1577	b9	TNL	80	red	1605											br9	TNL	80	red	559					
																									br10	TNL	80	red	470

					2st1	TNL	80	red	885	2C1	TNL	140	blue	210						2BR1	TNL	80	red	2.226
					stb main	TNL	80	red	3.558	2C2	TNL	140	blue	199						2BR2	TNL	80	red	1.843
										2C3	TNL	140	blue	209						2BR3	TNL	80	red	620
										2C4	TNL	140	blue	225						2BR4	TNL	80	red	296
										2C5	TNL	80	blue	943						3BR1	TNL	80	red	2.089
										2C6	TNL	80	blue	764										
										2C7	TNL	80	red	980										

3A1	TNL	280	green	4529	3B1	TNL	280	blue	4.446	3C1	TNL	280	blue	4674					
3A2	TNL	280	green	4525	3B2	TNL	280	blue	4.459	3C2	TNL	280	blue	4685					
3A3	TNL	220	green	3753	3B3	TNL	220	blue	3.765	3C3	TNL	220	blue	4130					
															brmain Tarax 240 Red 3082				
															knot point: 2882				



# LINES TECHNICAL DATA

KOYOT 5					26																								
A					B					C					D					BRAKE									
ref.	mat.	kg	colour	m/m	ref.	mat.	kg	colour	m/m	ref.	mat.	kg	colour	m/m	ref.	mat.	kg	colour	m/m	ref.	mat.	kg	colour	m/m					
a1	TNL	140	green	1464	b1	TNL	140	blue	1448	c1	TNL	80	blue	1038	d1	TNL	80	blue	1113	br1	TNL	80	red	1827					
a2	TNL	140	green	1431	b2	TNL	140	blue	1414	c2	TNL	80	blue	1018	d2	TNL	80	blue	1094	br2	TNL	80	red	1479					
a3	TNL	140	green	1389	b3	TNL	140	blue	1362	c3	TNL	80	blue	967	d3	TNL	80	blue	1040	br3	TNL	80	red	1346					
a4	TNL	140	green	1352	b4	TNL	140	blue	1330	c4	TNL	80	blue	921	d4	TNL	80	blue	988	br4	TNL	80	red	1598					
a5	TNL	80	green	2121	b5	TNL	80	blue	2037	c5	TNL	80	blue	721	d5	TNL	80	blue	802	br5	TNL	80	red	1422					
a6	TNL	80	green	2006	b6	TNL	80	blue	1935	c6	TNL	80	blue	799	d6	TNL	80	blue	864	br6	TNL	80	red	1436					
a7	TNL	80	green	1936	b7	TNL	80	blue	1888	c7	TNL	80	blue	537	d7	TNL	80	blue	590	br7	TNL	80	red	555					
a8	TNL	80	red	1004	b8	TNL	80	red	953	c9	TNL	80	red	1815						br8	TNL	80	red	407					
a9	TNL	80	red	1715	b9	TNL	80	red	1745											br9	TNL	80	red	607					
																									br10	TNL	80	red	511

					2st1	TNL	80	red	962	2C1	TNL	140	blue	227						2BR1	TNL	80	red	2.413
					stb main	TNL	80	red	3.925	2C2	TNL	140	blue	218						2BR2	TNL	80	red	2.004
										2C3	TNL	140	blue	226						2BR3	TNL	80	red	672
										2C4	TNL	140	blue	245						2BR4	TNL	80	red	323
										2C5	TNL	80	blue	1025						3BR1	TNL	80	red	2.278
										2C6	TNL	80	blue	831										
										2C7	TNL	80	red	1066										

3A1	TNL	280	green	4967	3B1	TNL	280	blue	4.873	3C1	TNL	280	blue	5124											
3A2	TNL	280	green	4969	3B2	TNL	280	blue	4.896	3C2	TNL	280	blue	5143						brmain	Tarax	240	Red	3377	
3A3	TNL	220	green	4134	3B3	TNL	220	blue	4.148	3C3	TNL	220	blue	4543						knot point:					3177



# LINES TECHNICAL DATA

KOYOT 5					31																								
A					B					C					D					BRAKE									
ref.	mat.	kg	colour	m/m	ref.	mat.	kg	colour	m/m	ref.	mat.	kg	colour	m/m	ref.	mat.	kg	colour	m/m	ref.	mat.	kg	colour	m/m					
a1	TNL	140	green	1597	b1	TNL	140	blue	1580	c1	TNL	80	blue	1133	d1	TNL	80	blue	1265	br1	TNL	80	red	1994					
a2	TNL	140	green	1565	b2	TNL	140	blue	1547	c2	TNL	80	blue	1112	d2	TNL	80	blue	1244	br2	TNL	80	red	1615					
a3	TNL	140	green	1516	b3	TNL	140	blue	1487	c3	TNL	80	blue	1056	d3	TNL	80	blue	1182	br3	TNL	80	red	1473					
a4	TNL	140	green	1478	b4	TNL	140	blue	1454	c4	TNL	80	blue	1005	d4	TNL	80	blue	1123	br4	TNL	80	red	1744					
a5	TNL	80	green	2316	b5	TNL	80	blue	2224	c5	TNL	80	blue	787	d5	TNL	80	blue	911	br5	TNL	80	red	1554					
a6	TNL	80	green	2191	b6	TNL	80	blue	2114	c6	TNL	80	blue	873	d6	TNL	80	blue	982	br6	TNL	80	red	1571					
a7	TNL	80	green	2116	b7	TNL	80	blue	2063	c7	TNL	80	blue	586	d7	TNL	80	blue	671	br7	TNL	80	red	605					
a8	TNL	80	red	1096	b8	TNL	80	red	1041	c9	TNL	80	red	1982						br8	TNL	80	red	446					
a9	TNL	80	red	1872	b9	TNL	80	red	1905											br9	TNL	80	red	662					
																									br10	TNL	80	red	558

					2st1	TNL	80	red	1.050	2C1	TNL	140	blue	246						2BR1	TNL	80	red	2.628
					stb main	TNL	80	red	4.347	2C2	TNL	140	blue	240						2BR2	TNL	80	red	2.188
										2C3	TNL	140	blue	246						2BR3	TNL	80	red	733
										2C4	TNL	140	blue	269						2BR4	TNL	80	red	355
										2C5	TNL	80	blue	1118						3BR1	TNL	80	red	2.495
										2C6	TNL	80	blue	908										
										2C7	TNL	80	red	1165										

3A1	TNL	280	green	5468	3B1	TNL	280	blue	5.364	3C1	TNL	280	blue	5640											
3A2	TNL	280	green	5478	3B2	TNL	280	blue	5.398	3C2	TNL	280	blue	5669						brmain	Tarax	240	Red	3715	
3A3	TNL	220	green	4571	3B3	TNL	220	blue	4.587	3C3	TNL	220	blue	5018						knot point:					3515

## KOYOT 5 22

	A	B	C	D	BR
1	5873	5776	5825	5935	6769
2	5839	5741	5795	5907	6447
3	5799	5709	5769	5876	6324
4	5763	5677	5743	5842	6177
5	5702	5637	5724	5825	6013
6	5595	5542	5617	5705	6024
7	5530	5498	5592	5659	6071
8	5358	5311	5224		5935
9	5131	5159			5796
10					5707

RISERS LENGHT mm

A	A'	B	C	
470	470	470	470	STANDARD
340	340	383	470	ACCELERATED

## KOYOT 5 24

	A	B	C	D	BR
1	6155	6051	6105	6221	7091
2	6122	6017	6075	6191	6755
3	6082	5987	6051	6162	6627
4	6045	5955	6024	6128	6474
5	5983	5916	6005	6111	6304
6	5872	5817	5894	5986	6317
7	5804	5771	5868	5938	6369
8	5625	5576	5485		6227
9	5388	5417			6082
10					5990

RISERS LENGHT mm

A	A'	B	C	
470	470	470	470	STANDARD
340	340	383	470	ACCELERATED

## KOYOT 5 26

	A	B	C	D	BR
1	6427	6317	6375	6495	7397
2	6394	6283	6346	6467	7049
3	6354	6254	6322	6438	6916
4	6317	6222	6295	6402	6759
5	6253	6183	6277	6386	6583
6	6138	6081	6161	6257	6597
7	6068	6034	6134	6207	6652
8	5882	5831	5736		6504
9	5636	5666			6355
10					6259

RISERS LENGHT mm

A	A'	B	C	
470	470	470	470	STANDARD
340	340	383	470	ACCELERATED

## KOYOT 5 28

	A	B	C	D	BR
1	6688	6573	6634	6759	7693
2	6655	6539	6606	6731	7333
3	6615	6512	6582	6703	7196
4	6578	6480	6555	6667	7034
5	6513	6440	6538	6657	6852
6	6394	6334	6419	6524	6868
7	6322	6286	6391	6473	6925
8	6129	6076	5977		6773
9	5873	5904			6618
10					6519

RISERS LENGHT mm

A	A'	B	C	
470	470	470	470	STANDARD
340	340	383	470	ACCELERATED

# KOYOT 5 31

	<b>A</b>	<b>B</b>	<b>C</b>	<b>D</b>	<b>BR</b>
1	7061	6940	7005	7137	8117
2	7029	6907	6978	7110	7738
3	6990	6881	6957	7083	7596
4	6952	6848	6929	7047	7427
5	6891	6809	6911	7031	7237
6	6766	6699	6787	6892	7254
7	6685	6648	6757	6838	7318
8	6478	6429	6325		7159
9	6209	6248			6997
10					6893

RISERS LENGHT mm

A	A'	B	C	
470	470	470	470	STANDARD
340	340	383	470	ACCELERATED

## SUSPENSION TECHNICAL DATA

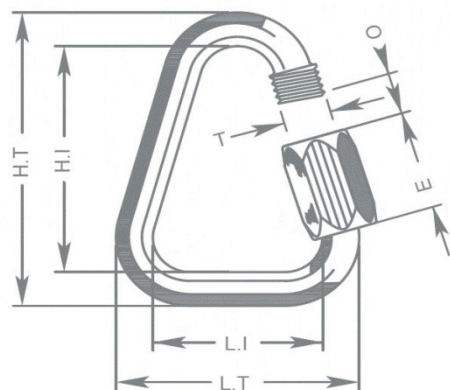
<b>MATERIAL CODE</b>		<b>TNL</b>	<b>TNL</b>	<b>TNL</b>	<b>TNL</b>	<b>A-8000/U</b>
<b>STRENGTH CODE</b>		080	140	220	280	240
<b>DIAMETER m/m</b>	∅	1,1	1,4	1,6	1,8	1,9
<b>CORE MATERIAL</b>		Technora	Technora	Technora	Technora	Dyneema
<b>SLEEVE MATERIAL</b>		Polyester	Polyester	Polyester	Polyester	Polyester
<b>WEIGHT G/M</b>	TOTAL	1,1	1,2	1,6	2,7	2,3
<b>BREAKING STRENGTH</b>	MINIMUM	80	140	220	280	240
	MAXIMUM	92	160	250	320	
<b>STRENGTH AFTER</b>						
<b>5.000 BENDING</b>	TEST EN	36,7	76,1	114,2	134,7	
<b>CYCLES</b>						
<b>ELONGATION AT</b>	5 daN en %	0,3	0,2	0,2	0,2	0,1-0,3
	10 daN en %	0,5	0,3	0,3	0,3	0,2-0,4
	15 daN en %	0,7	0,5	0,5	0,4	0,2-0,6
	20 daN en %	1	0,6	0,6	0,4	0,3-0,7
	25 daN en %	1,3	0,8	0,7	0,5	0,4-0,8
	30 daN en %	2,3	1,5	1,2	0,9	
	75 daN en %	2,8	2,3	1,8	1,3	0,9-1,2
	100 daN en %		2,7	2,2	1,7	1,1-1,5
	125 daN en %		3,2	2,7	2	
	150 daN en %			3	2,3	1,5-2,1
175 daN en %			3,3	2,7		
200 daN en %			3,8	2,8	2-2,8	
<b>ELONGATION MAX. BREAKING STRENGTH %</b>		3	3,4	4	4,1	

# MAILLON TECHNICAL DATA

## DESCRIPCIÓN

MAILLON	DELTA
REFERENCIA	MRI4
MATERIAL	STAINLESS STEEL
DIÁMETRO	4,3 m/m
PESO	12 G/PIECE
CANTIDAD	8 PIECES
INSERTS	4 GREEN / 4 BLACK

## ESPECIFICACIONES TÉCNICAS



DIMENSIONES	mm
L.T.	28
L.I.	20
H.T.	38
H.I.	30
O	4
E	11
T	4
CARGA	KG
TRABAJO	150
ROTURA	750

## MATERIAL

AISI 304 STAINLESS STEEL

STANDARD

## CIERRE MANUAL Y TOTALMENTE ENROSCADO

PARA GARANTIZAR LA MÁXIMA SEGURIDAD (LA ROSCA NO DEBE SER VISIBLE)

CONTROL SISTEMÁTICO DE LOS CIERRES RÁPIDOS DEL MAILLON ANTES DE CADA VUELO

## THREAD TECHNICAL DATA

### VELA

NAME	SERAFIL
N° OF REFERENCE	60
MATERIAL	POLYESTER
TYPE OF FINISH	SILK
LINEAR DENSITY	NM 61 / 3 (DTEX 163 * 3)
BREAKING STRENGTH	3,000 CN
ELONGATION	17,00%

### PROPIETIES SERAFIL

SOLIDITY ARTIFICIAL LIGTH	ISO 105 B02 > 5 - 6
SOLIDITY SWEAT	ISO 105 E04 > 4
SOLIDITY WASHING	ISO 105 C04 > 3
SOLIDITY GRAZE IN DRY	ISO 105 X12 > 4
SOLIDITY WASHING IN DRY	ISO 105 D01 > 3 - 4

TREATMENT WATER REPELLENT	WR
---------------------------	----

### BANDAS

NOMBRE	COATS BONDED C.F.P.
N° DE REFERENCIA	V138
MATERIAL	POLYESTER
ACABADO	SILK
RESISTENCIA A LA TRACCIÓN	9,5 KG
ELONGACIÓN	19%

## RISERS TECHNICAL DATA

### BANDAS

REFERENCIA	G-R 19
MATERIAL	POLYESTER & TECHNORA
ANCHO	19 M/M
GRUESO	1,6 M/M
RESISTENCIA A LA TRACCIÓN	1.100 DAN
ALARGAMIENTO	MAX. 11%
PESO	21,1 G/M
COLOR	BLACK

### INDICADOR COLOR

REFERENCIA	IC-G 1-2
MATERIAL	POLYESTER
ANCHO	70 M/M
GRUESO	0,80 M/M
RESISTENCIA A LA TRACCIÓN	130 DN
ALARGAMIENTO	35 %
PESO	32 G * L.M.
COLOR	GREEN

### CINTAS DE CARGA

REFERENCIA	LKI - 10
MATERIAL	NYLON
ANCHO	10 M/M
RESISTENCIA A LA TRACCIÓN	84 KG
ALARGAMIENTO	30 %
PESO	5,5 G/M
COLOR	WHITE



**Niviuk Gliders & Air Games SL**

C/ Del Ter 6 - nave D

17165 La Cellera de Ter - Girona - Spain

+34 972 422 878

info@niviuk.com

[www.niviuk.com](http://www.niviuk.com)

